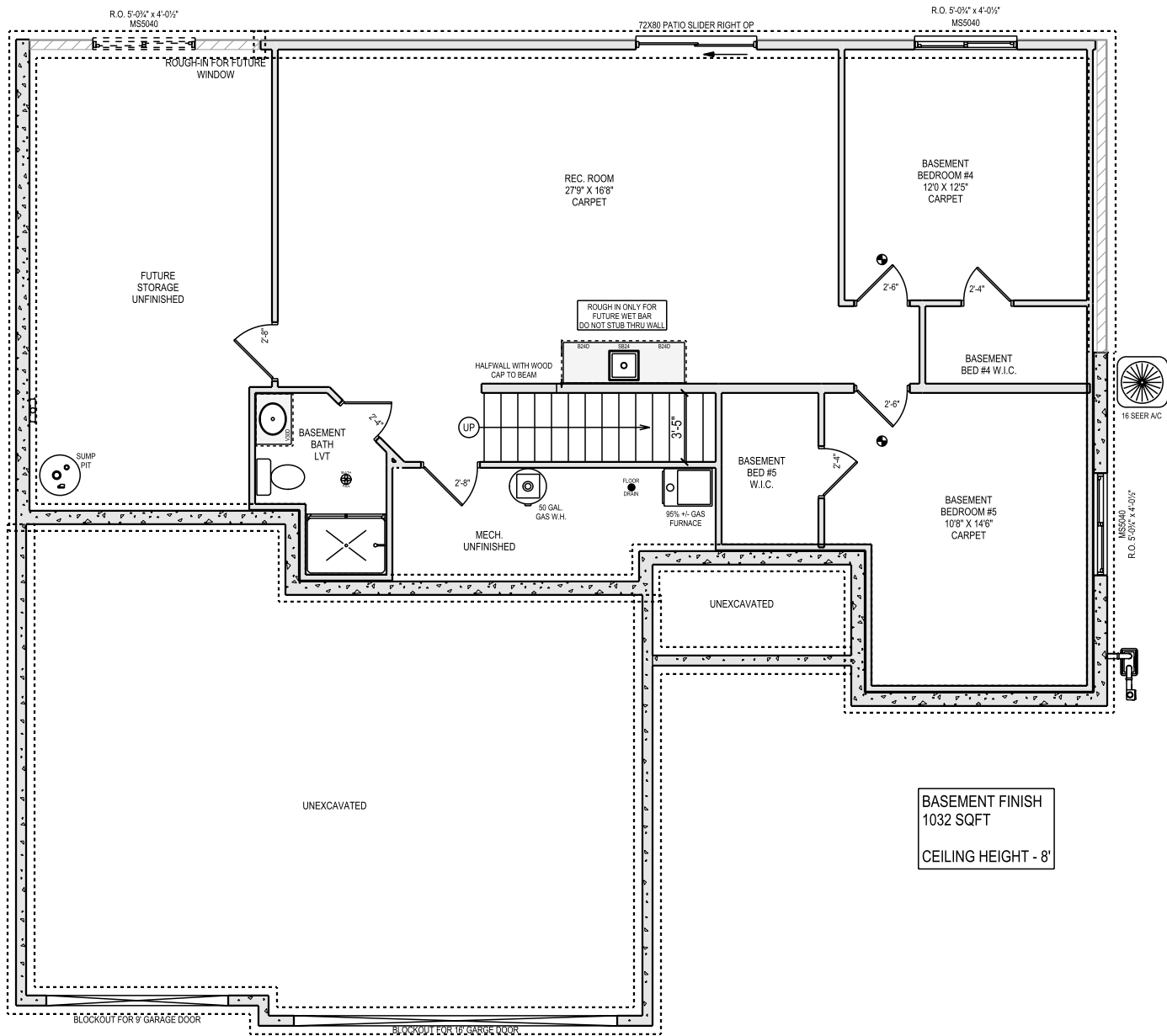


MAIN FLOOR
 1507 SQ FT
 BASEMENT FINISH
 1032 SQ FT
 GARAGE
 684 SQ FT
 9' MAIN FLOOR CEILING HEIGHT
 UNLESS OTHERWISE NOTED



BASEMENT FINISH
1032 SQFT
CEILING HEIGHT - 8'